

Contact Yard Interp Binder



Table of Contents:

Interpretive Station Guidelines.....	Page 2
About Our Individuals.....	Page 4
ID Photos.....	Page 5

Contact Yard Interp Binder

Contact Yard Guidelines:

Working the contact yard is very simple: let the visitors into the pen next to the goats, explain the behavior the goats may exhibit, and supervising visitors who want to brush and pet the goats. You will also possibly get questions about the other contact animals (miniature horse, donkeys, and sheep), so you should be prepared and know your fact sheets!

When staffing the contact yard:

1. Take the Contact Yard and CEF closet key, a radio if available, a clicker, and the contact yard binder (This binder contains info on the animals including their names, rules, a place for recording visitors, etc.)
2. Stop by the CEF closet on your way down the contact yard and grab the chairs (optional), umbrella, broom, and brushes.
3. During the warmer parts of the year, turn on the handwashing sink. **DO NOT TURN ON THE SINK IN THE WINTER** (the pipe will burst and water will be spraying everywhere until maintenance can get down there.)
4. Please use the broom to keep the area neat.
5. If you need to reach the keeper, use your radio to call “docent to contact yard keeper”.
6. **NO ONE MAY GO INTO THE BARN OR CLIMB THE FENCES.**
 - a. That goes for all docents and ZooTeens.
 - b. **THE CONTACT YARD IS AN ANIMAL AND KEEPER AREA ONLY.** You wouldn’t go into another animal’s enclosure; the contact yard is not an exception.
7. There is no charge, tokens or otherwise, to visit the contact zoo. It is only open when an employee, docent, or ZooTeen is staffing the area.
8. **NO FOOD** inside of the pen at any time.
9. Small children must be accompanied by an adult at all times.
10. Capacity for the pen is about 20 visitors, use your best judgement.
11. No strollers, umbrellas, etc. inside of the pen.
12. All visitors that come into contact with the animals should be **STRONGLY ENCOURAGED** to wash their hands (or to sanitize) before exiting the area.
13. Ensure that the animals are treated kindly. No pulling fur, hitting, or throwing things at goats (even hay!).
 - a. In the case of children, keep in mind they may not know how to behave. Model how to pet the goats and brush them gently.
14. Contact zoo animals have access to their barn. While we hope that they stay outside, let visitors know that we allow the animals inside access, and particularly in the case of hot weather, they may choose not to come out.

Contact Yard Interp Binder

15. Goats are curious animals. They will attempt to nibble at dangling jewelry, clothing, etc.
16. Track the number of visitors with the clicker and record on the count sheet in the contact yard binder.
17. At the end of your shift, turn off the water to the sink (if it is warm outside), lock up the pen, and return the materials to the CEF closet (chairs, umbrella, broom, and brushes).
18. Return the Contact Yard and CEF keys to the Discovery Center.



Contact Yard Interp Binder

Facts about Our Individuals:

African Pygmy:

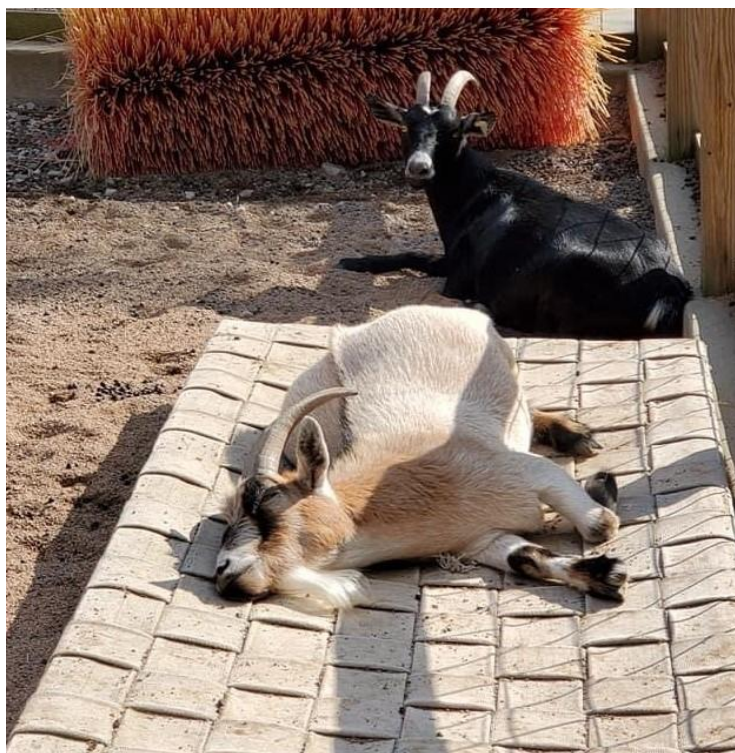
Name	Gender	Defining Features
August	Female	Tiny white dot on nose, mostly black.
Ducky	Female	Has a fully white nose.
Littlefoot	Male	The blonde one.
Sharptooth	Male	Has a lot of grey on his neck.
Petrie	Male	Has grey speckles on most of his body.

Miniature Horse:

Name	Gender	Defining Features
Clarence	Male	Only him on exhibit.

Miniature Donkey:

Name	Gender	Defining Features
Jill	Female	Darker, longer darker stripe.
Sunshine	Female	Lighter, shorter lighter stripe.

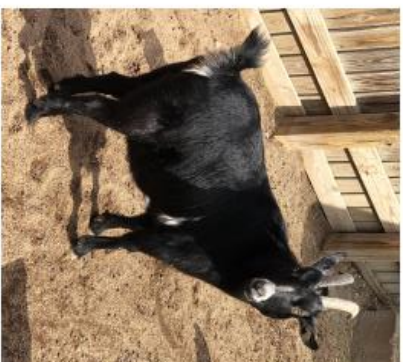


Contact Yard Interp Binder

Contact Yard African Pygmy Identification



August (F)
#114024 DOB: 5/08



Ducky (F)
#114022 DOB:4/9/14



Littlefoot (M)
#114023 DOB:5/9/14



Sharpooth (M)
#114021 DOB:4/20/14



Petrie (M)
#114020 DOB:4/19/14

Contact Yard Interp Binder

Donkeys:

